

T.16N.,R.64W.,6th P.M.

1/4 Cor. S.9/S.10

RECEIVED  
LARAMIE COUNTY  
CHEYENNE, WY.

'93 SEP 3 AM 10 29

126091

CERTIFIED LAND CORNER RECORDATION

DESCRIPTION OF CORNER EVIDENCE FOUND, AND ORIGINAL RECORD (If known)

Original Survey: Alfred M. Rodgers, U.S. Deputy Surveyor, July 1871  
Record: Unknown

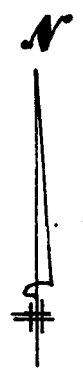
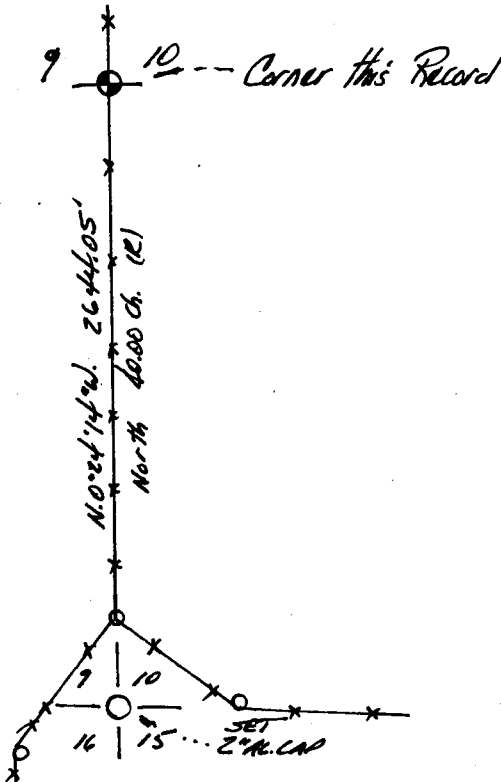
8-11-1993 Found: Recovered a well set quartz stone in a north-south fenceline.  
Stone was marked 1/4 on east face, 0.5' north of north r.r. tie  
brace posts.

DESCRIPTION OF MONUMENT AND ACCESSORIES ESTABLISHED  
TO PERPETUATE THE ORIGINAL LOCATION OF THIS CORNER:

Set: Steel fence post witness north and adjacent of found original  
1/4 corner.

SKETCH, WITH COURSE AND DISTANCE TO ADJACENT CORNER IF DETERMINED IN THIS SURVEY.  
(May Sketch or Paste Reproduction on Reverse Side.)

✱ ✱ SKETCH ONLY  
NOT TO SCALE

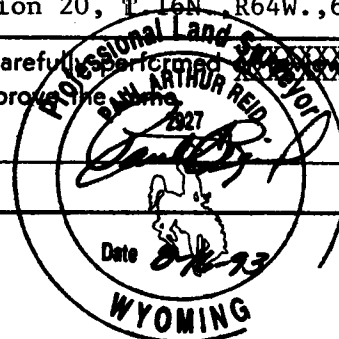


Basis of Bearings: Solar Observation at the NW Corner of Section 20, T.16N. R64W.,6th P.M.

I, PAUL A. REID certify that I have carefully performed the work  
done on the diagrammed corner as reported on this recordation form and approved the same.

Signature of Surveyor

2927  
Registration No.



STATE OF WYOMING,  
Office of Clerk and Recorder,  
County of \_\_\_\_\_

This "corner record" was filed for record on the \_\_\_\_\_ day of \_\_\_\_\_, 19\_\_\_\_, was noted  
on the cross-index plat and is assigned page No. \_\_\_\_\_, in book No. \_\_\_\_\_.

County Official		
Cross Index No. <u>G13</u>	T. <u>16N.</u>	R. <u>64W., 6thP.</u> Mer.
_____	T. _____	R. _____ Mer.
_____	T. _____	R. _____ Mer.
_____	T. _____	R. _____ Mer.
_____	T. _____	R. _____ Mer.
_____	T. _____	R. _____ Mer.
_____	T. _____	R. _____ Mer.

1/4 Corner S.9/S.10